

Artified International[®]

**ELECTROSURGERY
INSTRUMENTS
CATALOGUE**



**Ultimate Electrosurgery
Solutions**

1. BIPOLAR FORCEPS	3 - 5
2. MONOPOLAR FORCEPS	6
3. NON-STICK BIPOLAR FORCEPS	7 - 8
4. IRRIGATION BIPOLAR FORCEPS	9
5. EUROPEAN BIPOLAR FORCEPS	10 - 12
6. EUROPEAN NON-STICK BIPOLAR FORCEPS	13 - 14
7. DISPOSABLE BIPOLAR FORCEPS	15
8. DIATHERMY INSTRUMENTS	16
9. BIPOLAR CABLE	17 - 18
10. MONOPOLAR CABLE	19

OPHTHALMIC BIPOLAR FORCEPS



McPHERSON (STR.)
A-ES-1000



McPHERSON (CRV.)
A-ES-1001



COAPTATION NADLER
A-ES-1002



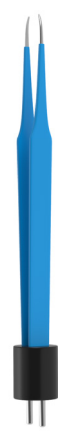
COAPTATION
A-ES-1003



JEWELLER #5
A-ES-1004



JEWELLER #4
A-ES-1005



TENZEL
A-ES-1006



JEWELLER #7
A-ES-1007



IRIS (STR.)
A-ES-1008

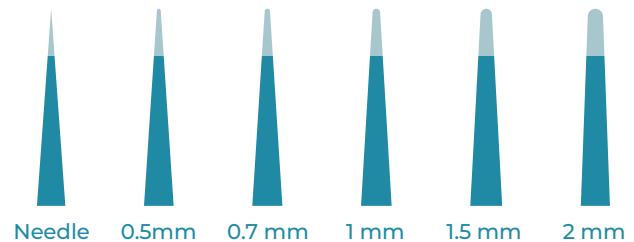


IRIS (CRV.)
A-ES-1009

CAT #	DESCRIPTION	TIP (MM)	SIZE
A-ES-1000	McPHERSON (STR.)	0.5	3 1/2" (9.0 cm)
A-ES-1001	McPHERSON (CRV.)	0.5	3 1/2" (9.0 cm)
A-ES-1002	COAPTATION NADLER	0.5	4" (10.2 cm)
A-ES-1003	COAPTATION	0.5	4 1/4" (10.8 cm)
A-ES-1004	JEWELLER #5	Micro, 0.5	4 1/2" (11.5 cm)
A-ES-1005	JEWELLER #4	Micro, 0.5	4 1/2" (11.5 cm)
A-ES-1006	TENZEL	Micro, 0.5	4" (10.2 cm)
A-ES-1007	JEWELLER #7	Micro, 0.5	4 1/2" (11.5 cm)
A-ES-1007	IRIS (STR.)	1.0	4 1/4" (10.8 cm)
A-ES-1009	IRIS (CRV.)	1.0	4 1/4" (10.8 cm)

Available Tip Widths

*Always Specify Tip Width



For your convenience, add the following tip extension to product code.

Needle Tip (-00), 0.5 mm (-05), 1.0 mm (-10) and 2.0 mm (-20)

PLASTIC & RECONSTRUCTIVE BIPOLAR FORCEPS

ADSON
A-ES-1010



SEMKIN
A-ES-1011



CUSHING
A-ES-1012



CUSHING
A-ES-1013



CUSHING (GURSH)
A-ES-1014



GERALD (STR.)
A-ES-1015



GERALD (CRV.)
A-ES-1016



GERALD BAYONET
A-ES-1017



CAT #	DESCRIPTION	TIP (MM)	SIZE
A-ES-1010	ADSON	1.0	4 3/4" (12.1 cm)
A-ES-1110	ADSON	1.0	6" (15.2 cm)
A-ES-1011	SEMKIN	0.5	5 1/2" (14.0 cm)
A-ES-1012	CUSHING	1.0, 1.5	6 1/4" (15.9 cm)
A-ES-1013	CUSHING	1.0, 2.0	7" (17.8 cm)
A-ES-1014	CUSHING (GURSH)	2.0	7" (17.8 cm)
A-ES-1015	GERALD (STR.)	1.0, 1.5	7" (17.8 cm)
A-ES-1016	GERALD (CRV.)	1.0, 1.5	7" (17.8 cm)
A-ES-1017	GERALD BAYONET	1.0, 1.5	7 1/4" (18.4 cm)

For your convenience, add the following tip extension to product code.

Needle Tip (-00), 0.5 mm (-05),
1.0 mm (-10) and 2.0 mm (-20)

NEUROSURGICAL BIPOLAR FORCEPS

JANSEN BAYONET
A-ES-1018



JANSEN BAYONET
A-ES-1019



MALIS
A-ES-1020



**SCOVILLE
GREENWOOD**
A-ES-1022



YASARGIL
A-ES-1023



HARDY BAYONET
A-ES-1024



**HARDY BAYONET
(ANGLED)**
A-ES-1025



CAT #	DESCRIPTION	TIP (MM)	SIZE
A-ES-1018	JANSEN BAYONET	0.5, 1.0, 1.5	5 1/4" (15.9 cm)
A-ES-1019	JANSEN BAYONET	0.5, 1.0, 1.5	6" (15.2 cm) R-
A-ES-1111	JANSEN BAYONET	0.5, 1.0, 1.5	7" (17.8 cm) R-A
-ES-1112	JANSEN BAYONET	1.0, 1.5, 2.0	8" (20.4 cm)
A-ES-1020	MALIS	0.5, 1.0, 2.0	7" (17.8 cm)
A-ES-1021	SCOVILLE (GREENWOOD)	1.0, 1.5	7 1/2" (19.1 cm)
A-ES-1022	YASARGIL	1.0, 1.5	7 3/4" (19.7 cm)
A-ES-1023	HARDY	1.0	8 1/2" (21.6 cm)
BAYONET		1.0	8 1/2" (21.6 cm)
A-ES-1113	HARDY BAYONET (ANGLED)		

For your convenience, add the following tip extension to product code.

**Needle Tip (-00), 0.5 mm (-05),
1.0 mm (-10) and 2.0 mm (-20)**

MONOPOLAR FORCEPS

JEWELLER #4 A-
ES-1026



JEWELLER # 7
A-ES-1026



ADSON

A-ES-1027



POTTS-SMITH

A-ES-1028



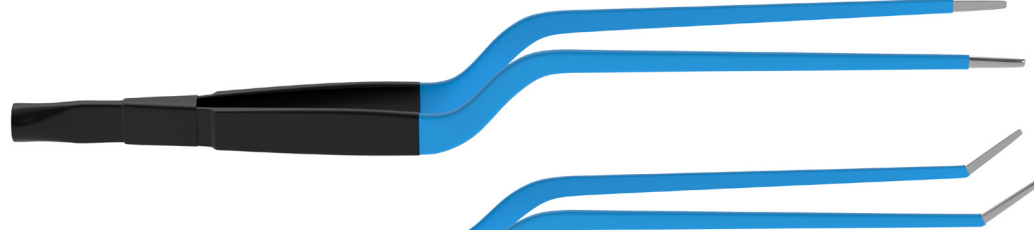
POTTS-SMITH A-ES-
1029



MALIS
A-ES-1030



**JANSEN
BAYONET A-**
ES-1031



**JANSEN
BAYONET (**
ANGLED UP)
A-ES-1032



CAT #	DESCRIPTION	TIP (MM)	SIZE
A-ES-1026	JEWELLER #4	MICRO	4 1/2" (11.5 cm)
A-ES-1027	JEWELLER #7	MICRO	4 1/2" (11.5 cm)
A-ES-1028	ADSON	1.0	4 3/4" (12.1 cm)
A-ES-1029	POTTS-SMITH	2.0	7" (17.8 cm)
A-ES-1030	POTTS-SMITH	2.0	8 1/4" (21.0 cm)
A-ES-1114	POTTS-SMITH	2.0	9 1/2" (24.1 cm)
A-ES-1031	MALIS	1.0, 1.5	7" (17.8 cm)
A-ES-1032	JANSEN BAYONET	1.5	5 1/4" (13.3 cm)
A-ES-1033	JANSEN BAYONET	1.5	6 1/4" (15.9 cm)
A-ES-1115	JANSEN BAYONET	2.0	7 1/2" (19.1 cm)

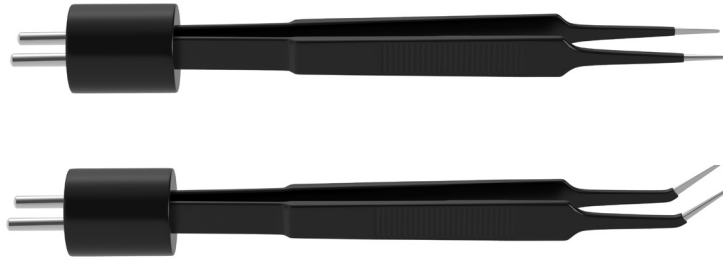
CAT #	DESCRIPTION	TIP (MM)	SIZE
A-ES-1116	JANSEN BAYONET	2.0	8 1/4" (21.0 cm)
A-ES-1117	JANSEN BAYONET (UPWARD CURVED TIP)	2.0	7 1/2" (19.1 cm)
A-ES-1018	JANSEN BAYONET (UPWARD CURVED TIP)	2.0	8 1/4" (21.0 cm)

For your convenience, add the following tip extension to product code.

Needle Tip (-00), 0.5 mm (-05), 1.0 mm (-10) and 2.0 mm (-20)

NON-STICK BIPOLAR FORCEPS

MCPHERSON
(STR.)
A-ES-1032
MCPHERSON
(CRV.)
A-ES-1033



JEWELLER #5
A-ES-1034



JEWELLER #4
A-ES-1035



ADSON
A-ES-1036



SEMKIN
A-ES-1037



CUSHING A-
ES-1038



CUSHING
A-ES-1039



More designs are available in Non-Stick Bipolar Forceps.

Use "NS" extensions to any regular Bipolar Forceps for conversion into Non-Stick Bipolar Forceps.

Available Tip Size:
0.7 mm, 1.0 mm, 1.5 mm, and 2.0 mm.

NON-STICK BIPOLAR FORCEPS

GERALD BAYONET
A-ES-1040



JANSEN BAYONET
A-ES-1041



**SCOVILLE -
GREENWOOD**
A-ES-1042



YASARGIL
A-ES-1043



HARDY BAYONET
A-ES-1044



More designs are available in Non- Stick Bipolar Forceps.

Use "NS" extensions to any regular Bipolar Forceps for conversion into Non-Stick Bipolar Forceps.

Available Tip Size:
0.7 mm, 1.0 mm, 1.5 mm, and 2.0 mm.

IRRIGATION BIPOLAR FORCEPS

HARDY BAYONET
A-ES-1045



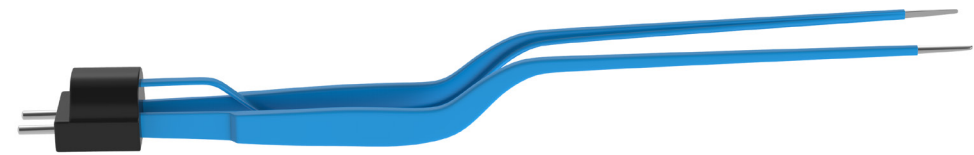
JANSEN BAYONET
A-ES-1046



**SCOVILLE
GREENWOOD**
A-ES-1047



GERALD BAYONET
A-ES-1048



CUSHING
A-ES-1049



CAT #	DESCRIPTION	TIP (MM)	SIZE
A-ES-1045	HARDY BAYONET	1.5	8 1/2" (21.6 cm)
A-ES-1046	JANSEN BAYONET	1.5	8" (20.4 cm)
A-ES-1047	SCOVILLE-GREENWOOD	1.5	7 3/4" (19.7 cm)
A-ES-1048	GERALD BAYONET	1.0	7 1/4" (18.4 cm)
A-ES-1049	CUSHING	1.0	6 1/4" (15.9 cm)

More Bipolar Irrigation forceps are available.

Use "IR" extension to any regular bipolar forceps.

EUROPEAN BIPOLAR FORCEPS



McPHERSON
A-ES-1050



**McPHERSON
(ANGLED)**
A-ES-1051



JEWELLER #7
A-ES-1052



ADSON
A-ES-1053



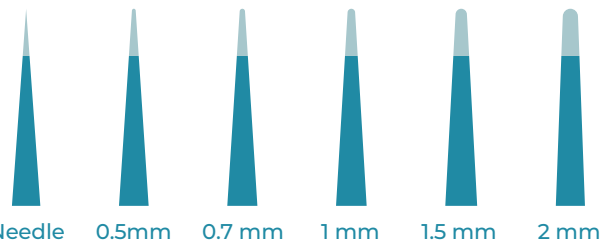
JEWELLER #5
A-ES-1054



**JEWELLER #5
(ANGLED) A-ES-1055**

CAT #	DESCRIPTION	TIP (MM)	SIZE
A-ES-1050	McPHERSON	0.5	4" (10.2 cm)
A-ES-1051	McPHERSON (ANGLED)	0.5	4" (10.2 cm)
A-ES-1054	JEWELLER #5	0.5, 0.7	4 1/2" (11.5 cm)
A-ES-1055	JEWELLER #5 (ANGLED)	0.5, 0.7	4 1/2" (11.5 cm)
A-ES-1052	JEWELLER #7	0.5, 0.7	4 1/2" (11.5 cm)
A-ES-1053	ADSON	1.0	4 3/4" (12.1 cm)
A-ES-1054	ADSON	1.0	6" (15.0 cm)

Available Tip Widths
*Always Specify Tip Width



For your convenience, add the following tip extension to product code.

Needle Tip (-00), 0.5 mm (-05), 1.0 mm (-10) and 2.0 mm (-20)

EUROPEAN BIPOLAR FORCEPS

STRAIGHT
A-ES-1056



STRAIGHT
A-ES-1057



STRAIGHT
A-ES-1058

STRAIGHT



A - ES - 1059



STRAIGHT ()
ANGLED ()



A - ES - 1060

STRAIGHT ()
ANGLED) A-ES-1061



STRAIGHT (ANGLED)



A-ES-1062

STRAIGHT (ANGLED) A-
ES-1063



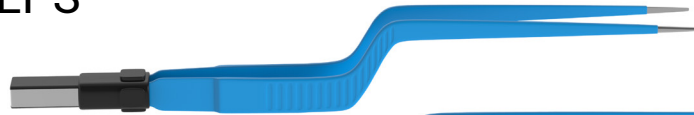
CAT #	DESCRIPTION	TIP (MM)	SIZE
A-ES-1056	STRAIGHT	0.5, 1.0, 2.0	6" (15.0 cm)
A-ES-1057	STRAIGHT	0.5, 1.0, 2.0	7" (18.0 cm)
A-ES-1058	STRAIGHT	0.5, 1.0, 2.0	7 3/4" (20.0 cm)
A-ES-1059	STRAIGHT	0.5, 1.0, 2.0	8 3/4" (22.0 cm)
A-ES-1120	STRAIGHT	0.5, 1.0, 2.0	9 1/2" (24.0 cm)
A-ES-1060	STRAIGHT (ANGLED)	0.5, 1.0, 2.0	6" (15.0 cm)
A-ES-1061	STRAIGHT (ANGLED)	0.5, 1.0, 2.0	7" (18.0 cm)
A-ES-1062	STRAIGHT (ANGLED)	0.5, 1.0, 2.0	7 3/4" (20.0 cm)
A-ES-1063	STRAIGHT (ANGLED)	0.5, 1.0, 2.0	8 3/4" (22.0 cm)
A-ES-1121	STRAIGHT (ANGLED)	0.5, 1.0, 2.0	9 1/2" (24.0 cm)

For your convenience, add the following tip extension to product code.

Needle Tip (-00), 0.5 mm (-05),
1.0 mm (-10) and 2.0 mm (-20)

EUROPEAN BIPOLAR FORCEPS

BAYONET
A-ES-1064



BAYONET
A-ES-1065



BAYONET
A-ES-1066



BAYONET (
ANGLED UP)
A-ES-1067



BAYONET (
ANGLED UP)
A-ES-1068



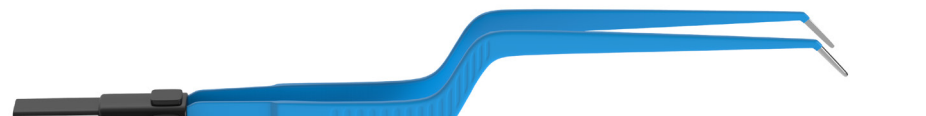
BAYONET (
ANGLED UP)
A-ES-1069



BAYONET (
ANGLED DOWN)
A-ES-1070



BAYONET (
ANGLED DOWN)
A-ES-1071



BAYONET (
ANGLED DOWN)
A-ES-1072



CAT #	DESCRIPTION	TIP (MM)	SIZE
A-ES-1064	BAYONET	0.5, 1.0, 2.0	6 1/2" (16.5 cm)
A-ES-1065	BAYONET	0.5, 1.0, 2.0	7" (18.0 cm)
A-ES-1066	BAYONET	0.5, 1.0, 2.0	7 3/4" (20.0 cm)
A-ES-1123	BAYONET	0.5, 1.0, 2.0	8 3/4" (22.0 cm)
A-ES-1124	BAYONET	0.5, 1.0, 2.0	9 1/2" (24.0 cm)
A-ES-1067	BAYONET (ANGLED UP)	0.5, 1.0, 2.0	6 1/2" (16.5 cm)
A-ES-1068	BAYONET (ANGLED UP)	0.5, 1.0, 2.0	7" (18.0 cm)
A-ES-1069	BAYONET (ANGLED UP)	0.5, 1.0, 2.0	7 3/4" (20.0 cm)
A-ES-1070	BAYONET (ANGLED UP)	0.5, 1.0, 2.0	8 3/4" (22.0 cm)
A-ES-1071	BAYONET (ANGLED UP)	0.5, 1.0, 2.0	9 1/2" (24.0 cm)

CAT #	DESCRIPTION	TIP (MM)	SIZE
A-ES-1072	BAYONET (ANGLED DOWN)	0.5, 1.0, 2.0	6 1/2" (16.5 cm)
A-ES-1125	BAYONET (ANGLED DOWN)	0.5, 1.0, 2.0	7" (18.0 cm) A
-ES-1126	BAYONET (ANGLED DOWN)	0.5, 1.0, 2.0	7 3/4" (20.0 cm) A
-ES-1128	BAYONET (ANGLED DOWN)	0.5, 1.0, 2.0	8 3/4" (22.0 cm) A
-ES-1127	BAYONET (ANGLED DOWN)	0.5, 1.0, 2.0	9 1/2" (24.0 cm)

For your convenience, add the following tip extension to product code.

Needle Tip (-00), 0.5 mm (-05), 1.0 mm (-10) and 2.0 mm (-20)

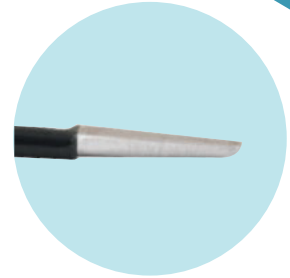
EUROPEAN NON-STICK BIPOLAR FORCEPS



McPHERSON
A-ES-1073



**McPHERSON
(ANGLED)**
A-ES-1074



JEWELLER #
5A-ES-1076



**JEWELLER #5
(ANGLED)**
A-ES-1077



ADSON
A-ES-1075

More designs are available in Non-Stick Bipolar Forceps.

Use "NS" extensions to any regular Bipolar Forceps for conversion into Non-Stick Bipolar Forceps.

Available Tip Size:
0.7 mm, 1.0 mm, 1.5 mm, and 2.0 mm.

EUROPEAN NON-STICK BIPOLAR FORCEPS

STRAIGHT
A-ES-1078

STRAIGHT A-
ES-1079



STRAIGHT
A-ES-1080



STRAIGHT
A-ES-1081



BAYONET
A-ES-1082



BAYONET
A-ES-1083



BAYONET
A-ES-1084



BAYONET A-
ES-1085



More designs are available in Non-Stick Bipolar Forceps.

Use "NS" extensions to any regular Bipolar Forceps for conversion into Non-Stick Bipolar Forceps.

Available Tip Size:
0.7 mm, 1.0 mm, 1.5 mm, and 2.0 mm.

DISPOSABLE BIPOLAR FORCEPS



GERALD (STR.)
A-ES-1086



JANSEN BAYONET (IRRIGATION)
A-ES-1087



JANSEN BAYONET
A-ES-1088



JEWELLER #5
A-ES-1089



ADSON
A-ES-1090

Forceps are supplied with 3m cable.
Available in Sterile / Non-Sterile packaging.
Sterilization by Ethylene Oxide (EO).

DIATHERMY INSTRUMENTS

6.5

ENGLISH MONOPOLAR (MALE 4.8 mm CONNECTOR)			
Cat #	Description	Tip (mm)	Size
A-ES-1091	ADSON	1.0	4 ^{3/4} * (12.0 cm)
A-ES-1092	McINDOE	1.0, 2.0	6" (15.0 cm)
A-ES-1093	GILLIES (1X2)	—	6" (15.0 cm)
A-ES-1139	GILLIES (1X2)	—	7" (17.8 cm)
A-ES-1140	GILLIES (1X2)	—	8" (20.0 cm)
A-ES-1141	GILLIES (1X2)	—	9" (24.0 cm)
A-ES-1094	DISSECTING FORCEPS	1.0, 2.0	6" (15.0 cm)
A-ES-1142	DISSECTING FORCEPS	1.0, 2.0	7" (17.8 cm)
A-ES-1143	DISSECTING FORCEPS	1.0, 2.0	8 ^{1/4} * (21.0 cm)
A-ES-1144	DISSECTING FORCEPS	1.0, 2.0	9 ^{1/2} * (24.1 cm)
A-ES-1145	GERALD (1X2)	—	7" (17.8 cm)
A-ES-1095	ADSON BAYONET	1.0, 2.0	6 ^{1/4} * (16.0 cm)
A-ES-1146	ADSON BAYONET	1.0, 2.0	7 ^{1/2} * (19.1 cm)
A-ES-1096	ADSON BAYONET (ANG. UP)	1.0, 2.0	6 ^{1/4} * (16.0 cm)
A-ES-1147	ADSON BAYONET (ANG. UP)	1.0, 2.0	7 ^{1/2} * (19.1 cm)
A-ES-1148	ADSON BAYONET (ANG. UP)	1.0, 2.0	8 ^{1/4} * (21.0 cm)
A-ES-1097	REMINGTON HOB	1.0, 2.0	9 ^{1/2} * (24.1 cm)

EUROPEAN MONOPOLAR (FEMALE 4.0 mm CONNECTOR)			
Cat #	Description	Tip (mm)	Size
R FEF	ADSON	1.0	4 ^{3/4} * (12.0 cm)
A-ES-1197	McINDOE	1.0, 2.0	6" (15.0 cm)
A-ES-1149	GILLIES (1X2)	—	6" (15.0 cm)
A-ES-1150	GILLIES (1X2)	—	7" (17.8 cm)
A-ES-1151	GILLIES (1X2)	—	8" (20.0 cm)
A-ES-1152	GILLIES (1X2)	—	9" (24.0 cm)
A-ES-1153	DISSECTING FORCEPS	1.0, 2.0	6" (15.0 cm)
A-ES-1154	DISSECTING FORCEPS	1.0, 2.0	7" (17.8 cm)
A-ES-1155	DISSECTING FORCEPS	1.0, 2.0	8 ^{1/4} * (21.0 cm)
A-ES-1156	DISSECTING FORCEPS	1.0, 2.0	9 ^{1/2} * (24.1 cm)
A-ES-1157	GERALD (1X2)	—	7" (17.8 cm)
A-ES-1158	ADSON BAYONET	1.0, 2.0	6 ^{1/4} * (16.0 cm)
A-ES-1159	ADSON BAYONET	1.0, 2.0	7 ^{1/2} * (19.1 cm)
A-ES-1160	ADSON BAYONET (ANG. UP)	1.0, 2.0	6 ^{1/4} * (16.0 cm)
A-ES-1161	ADSON BAYONET (ANG. UP)	1.0, 2.0	7 ^{1/2} * (19.1 cm)
A-ES-1162	ADSON BAYONET (ANG. UP)	1.0, 2.0	8 ^{1/4} * (21.0 cm)
A-ES-1163	REMINGTON HOB	1.0, 2.0	9 ^{1/2} * (24.1 cm)

EUROPEAN MONOPOLAR (MALE 4.0 mm CONNECTOR)			
Cat #	Description	Tip (mm)	Size
A-ES-1164	ADSON	1.0	4 ^{3/4} * (12.0 cm)
A-ES-1165	McINDOE	1.0, 2.0	6" (15.0 cm)
A-ES-1166	GILLIES (1X2)	—	6" (15.0 cm)
A-ES-1167	GILLIES (1X2)	—	7" (17.8 cm)
A-ES-1168	GILLIES (1X2)	—	8" (20.0 cm)
A-ES-1169	GILLIES (1X2)	—	9" (24.0 cm)
A-ES-1170	DISSECTING FORCEPS	1.0, 2.0	6" (15.0 cm)
A-ES-1171	DISSECTING FORCEPS	1.0, 2.0	7" (17.8 cm)
A-ES-1172	DISSECTING FORCEPS	1.0, 2.0	8 ^{1/4} * (21.0 cm)
A-ES-1173	DISSECTING FORCEPS	1.0, 2.0	9 ^{1/2} * (24.1 cm)
A-ES-1174	GERALD (1X2)	—	7" (17.8 cm)
A-ES-1175	ADSON BAYONET	1.0, 2.0	6 ^{1/4} * (16.0 cm)
A-ES-1176	ADSON BAYONET	1.0, 2.0	7 ^{1/2} * (19.1 cm)
A-ES-1177	ADSON BAYONET (ANG. UP)	1.0, 2.0	6 ^{1/4} * (16.0 cm)
A-ES-1178	ADSON BAYONET (ANG. UP)	1.0, 2.0	7 ^{1/2} * (19.1 cm)
A-ES-1179	ADSON BAYONET (ANG. UP)	1.0, 2.0	8 ^{1/4} * (21.0 cm)
A-ES-1180	REMINGTON HOB	1.0, 2.0	9 ^{1/2} * (24.1 cm)

MONOPOLAR (WITHOUT CONNECTOR)			
Cat #	Description	Tip (mm)	Size
A-ES-1181	ADSON	1.0	4 ^{3/4} * (12.0 cm)
A-ES-1182	McINDOE	1.0, 2.0	6" (15.0 cm)
A-ES-1183	GILLIES (1X2)	—	6" (15.0 cm)
A-ES-1184	GILLIES (1X2)	—	7" (17.8 cm)
A-ES-1185	GILLIES (1X2)	—	8" (20.0 cm)
A-ES-1186	GILLIES (1X2)	—	9" (24.0 cm)
A-ES-1187	DISSECTING FORCEPS	1.0, 2.0	6" (15.0 cm)
A-ES-1188	DISSECTING FORCEPS	1.0, 2.0	7" (17.8 cm)
A-ES-1189	DISSECTING FORCEPS	1.0, 2.0	8 ^{1/4} * (21.0 cm)
A-ES-1190	DISSECTING FORCEPS	1.0, 2.0	9 ^{1/2} * (24.1 cm)
A-ES-1191	GERALD (1X2)	—	7" (17.8 cm)
A-ES-1192	ADSON BAYONET	1.0, 2.0	6 ^{1/4} * (16.0 cm)
A-ES-1193	ADSON BAYONET	1.0, 2.0	7 ^{1/2} * (19.1 cm)
A-ES-1194	ADSON BAYONET (ANG. UP)	1.0, 2.0	6 ^{1/4} * (16.0 cm)
A-ES-1195	ADSON BAYONET (ANG. UP)	1.0, 2.0	7 ^{1/2} * (19.1 cm)
A-ES-1196	ADSON BAYONET (ANG. UP)	1.0, 2.0	8 ^{1/4} * (21.0 cm)
A-ES-1196	ADSON BAYONET (ANG. UP)	1.0, 2.0	9 ^{1/2} * (24.1 cm)



ADSON
A-ES-1091



McINDOE
A-ES-1091



GILLIES
A-ES-1092



DISSECTING
A-ES-1093



GERALD (1X2)
A-ES-1094



ADSON BAYONET
A-ES-1095

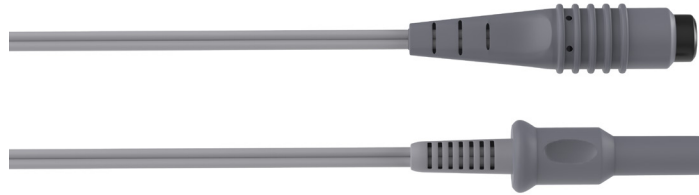


ADSON BAYONET (ANG. UP)
A-ES-1096



REMINGTON HOB
A-ES-1097

BIPOLAR CABLES



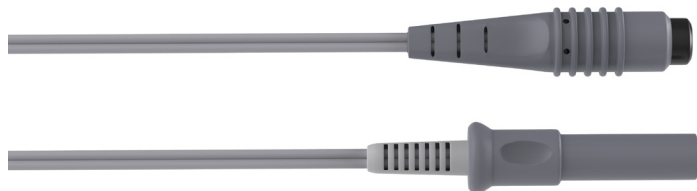
SILICONE EUROPEAN BIPOLAR CABLE 10' (3.0 M) A-ES-1098

Instrument Connector: European Flat Plug
Generator Connector: Martin Type
Compatibility: Aesculap, Martin, Berchtold, Wolf



SILICONE BIPOLAR CABLE 10' (3.0 M) A-ES-1099

Instrument Connector: USA 2-Pin
Plug Generator Connector: Martin
Type
Compatibility : Aesculap , Martin , Berchtold ,
Wolf



SILICONE EUROPEAN BIPOLAR CABLE 10' (3.0 M) A-ES-1100

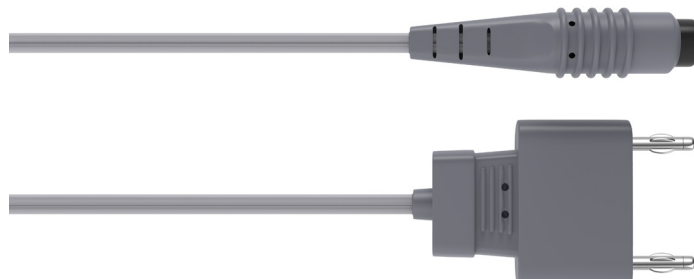
Instrument Connector: European Flat Plug
Generator Connector: Erbe Type
Compatibility: Erbe, Downs, Siemens

BIPOLAR CABLES



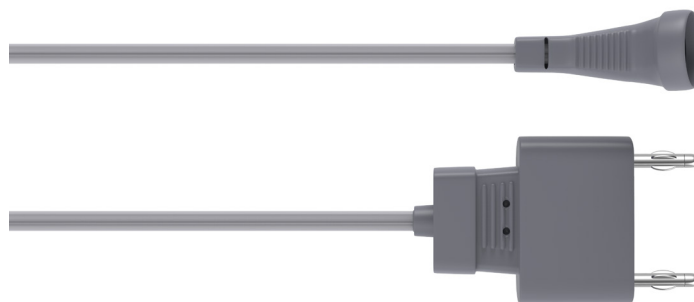
SILICONE BIPOLAR CABLE 10' (3.0 M) A-ES-1101

Instrument Connector: USA 2-Pin
Plug Generator Connector: Erbe Type
Compatibility: Erbe, Downs, Siemens



SILICONE EUROPEAN BIPOLAR CABLE 10' (3.0 M) A-ES-1102

Instrument Connector: European Flat Plug
Generator Connector: Pin Distance 29mm
Compatibility: Valleylab, EMC, Dolley



SILICONE BIPOLAR CABLE 10' (3.0 M)

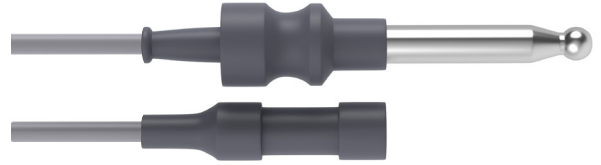
A-ES-1103

Instrument Connector: USA 2-Pin Plug
Generator Connector: Pin Distance 29mm
Compatibility: Valleylab, EMC, Dolley

MONOPOLAR CABLES

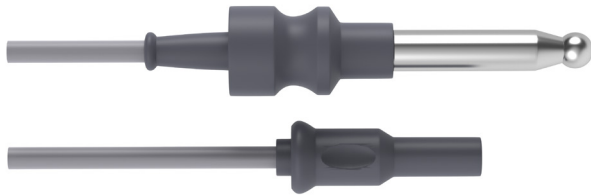


SILICONE MONOPOLAR CABLE 10' (3.0 M)
) A-ES-1104
 Instrument Connector: Screw Type
 Generator Connector : Standard Bovie® 8mm
 Compatibility: Valleylab, Conmed, Bovie®



SILICONE DIATHERMY CABLE 10' (3.0 M)
) A-ES-1105
 Instrument Connector: 4.8 mm Female Fitting
 (English Diathermy)

Generator Connector: Standard Bovie® 8mm Plug
 Compatibility: Valleylab, Conmed, Bovie®



SILICONE MONOPOLAR ENDOSCOPIC CABLE 10' (3.0 M)
) A-ES-1106
 Instrument Connector: 4mm Female Fitting
 Generator Connector: Standard Bovie® 8mm
 Compatibility: Valleylab, Conmed, Bovie®

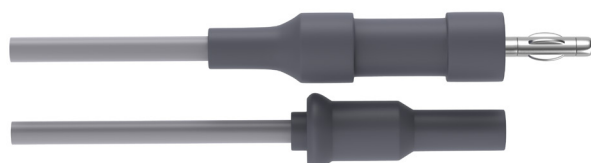


SILICONE DIATHERMY CABLE 10' (3.0 M)
) A-ES-1107
 Instrument Connector: 4.8 mm Female Fitting
 (English Diathermy)

Generator Connector: Standard 4mm Banana Plug
 Compatibility: Most ES Generators



SILICONE MONOPOLAR ENDOSCOPIC CABLE 10' (3.0 M)
) A-ES-1108
 Instrument Connector: USA 2-Pin Plug Generator
 Connector: Standard 4mm Banana Plug
 Compatibility: Most ES Generators



SILICONE DIATHERMY CABLE 10' (3.0 M)
) A-ES-1109
 Instrument Connector: 4mm Male Fitting (European Diathermy)
 Generator Connector: Standard 4mm Banana Plug
 Compatibility: Most ES Generators

+92-308-6442332

info@Artifiedinternational.com

www.Artifiedinternational.com